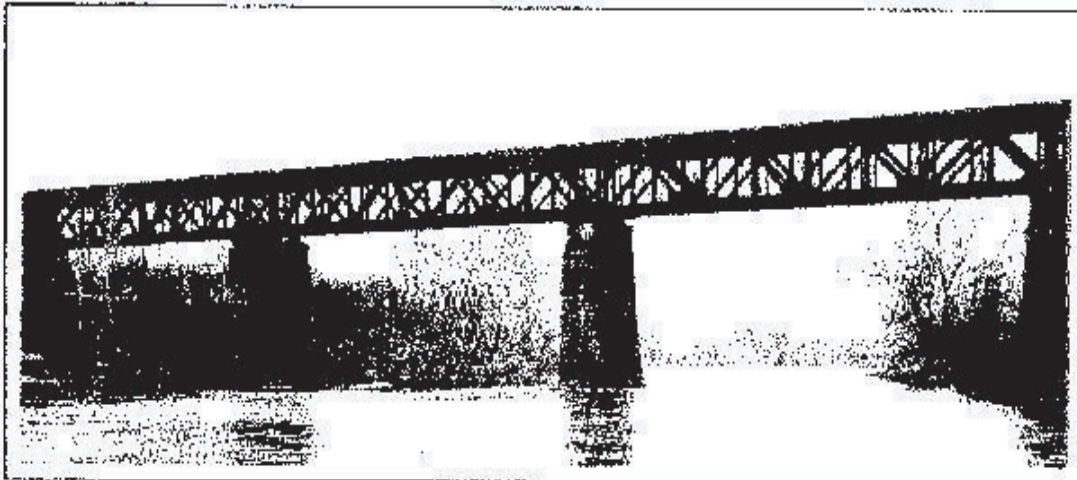


WEST PENN TRAIL
at
BRIDGE NO. 6

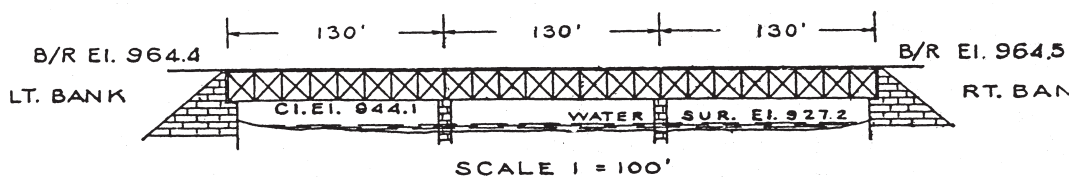


ENGINEER OFFICE CORPS OF ENGINEERS, U. S. ARMY PITTSBURGH, PA
CONEMAUGH RIVER, PA - RESERVOIR SITE
PENNA. R. R. BRIDGE AT SOCIAL HALL - LOOKING UPSTREAM

U. S.

DECEMBER 10, 1946

NO. 10583



SCALE 1 = 100'
PENNA. RAILROAD BRIDGE
MILE 49.1
STEEL DECK TRUSS BRIDGE 16' WIDE
SINGLE TRACK - 2 STONE PIERS 8' THICK
STONE ABUTMENTS

This bridge was removed in 1950, while the Conemaugh Dam was being built, because it was feared that floating debris would accumulate on the upstream side and so convert the bridge into a dam that might rupture suddenly, and release a huge surge of water that might sweep away Conemaugh Dam itself. The result would have been disaster down the valley.

This photo was taken shortly before construction of Conemaugh Dam was to begin, but World War II intervened; as soon as the war ended, work on the dam was begun, in 1949. This bridge replaced an earlier structure, all wood, that was destroyed by fire, on November 9, 1871; by Nov. 25, it had been replaced by a "similar structure" (a decked Howe truss).

The West Penn Trail is a project of the Conemaugh Valley Conservancy