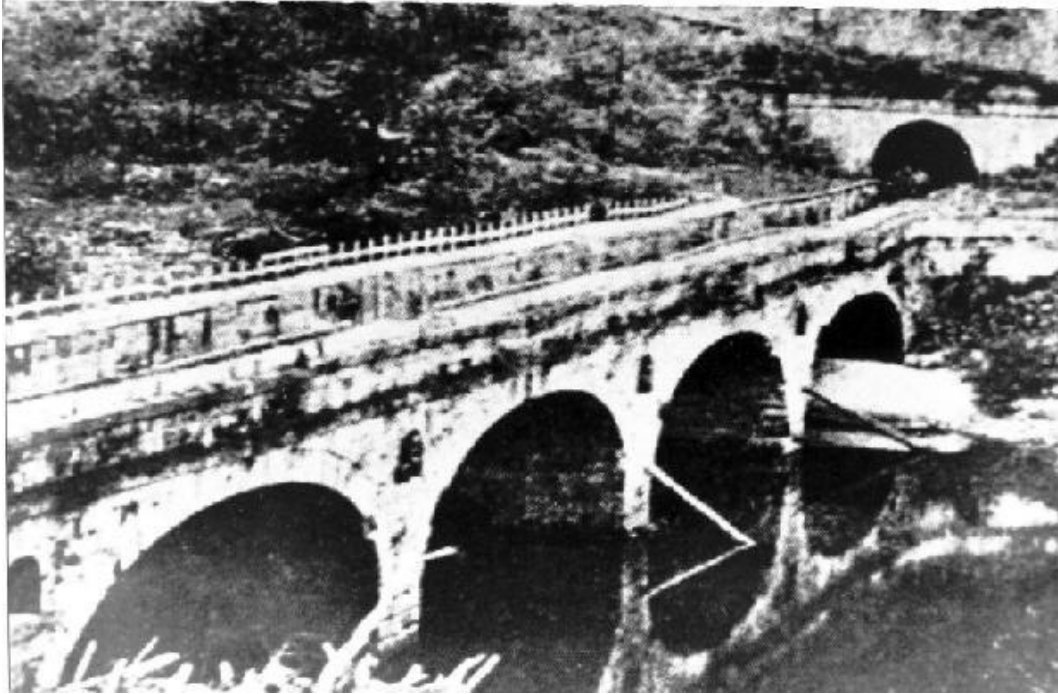


WEST PENN TRAIL at CANAL AQUEDUCT [1827]



When the water level is low in the river, it is possible to see, on the river bottom, the foundations of the piers that once supported an aqueduct that carried canal boats above the river and into the tunnel through Bow Ridge – only the third tunnel ever dug in America. The aqueduct was still intact in 1875, when the following entry appeared in Sipe's guidebook to the Pennsylvania Railroad:

The traveler can see a splendid aqueduct over the river, all now abandoned and useless, the interstices of the stone affording sustenance to tufts of grass and creeping vines, an enduring monument to the liberality of the State of Pennsylvania.

In 1827, when engineer Alonzo Livermore was building the canal up the west bank of the river from Saltsburg, he could not continue the canal beyond this point because there is no flat ground on either side of the river. He devised a solution novel for that day – he would build a tunnel:

For some time I was at a loss to conceive what should be done... Happily, however, I discovered a passage, where, by crossing the river to the south side and making a tunnel of 750 feet in length, through a hill of about 300 feet elevation, I could cut off in distance two and a quarter miles of the most unfavourable navigation...